



DEXSTAR
WHEEL

PRODUCT CATALOG

Dexstar Wheel, a division of Kenda USA, is located in Elkhart, IN and has focused on manufacturing world-class steel wheels for the marine, RV, utility trailer and manufactured housing industries for over 45 years. Using ISO9001 certified processes, our team of American workers is dedicated to consistently providing wheels that set the standard in the industry.



Starting with the highest quality American-made coiled steel, Dexstar wheels are produced in a multi-step process using state-of-the-art engineered equipment and technology. Strength and durability are inherent in our wheels through processes that include automated roll-forming lines, stamping operations, robotic assisted precision assembly and welding cells, which result in a quality product that meets or exceeds all industry standards.

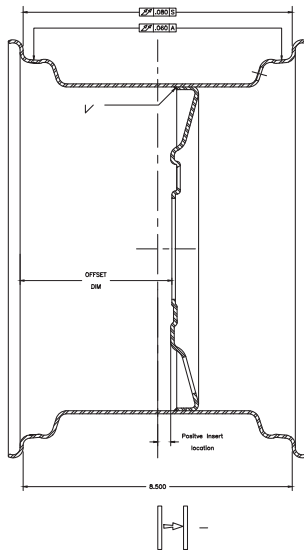
Once we have a fully assembled wheel, we protect that wheel with a comprehensive coating process. It starts with a thorough cleaning and rinse to remove any impurities, followed by an e-coat process that involves immersing the wheels in an electrically charged paint bath to seal the wheel surfaces and protect from corrosion. A final powder coat paint with a high friction co-efficient factor is then applied with an automated multi-step powder coat line, yielding a superior appearance with enhanced corrosion protection.



Each wheel comes with a two year limited warranty, friendly and knowledgeable customer service support and always meets or exceeds DOT specifications. You can ride with confidence when you have American made Dexstar wheels.

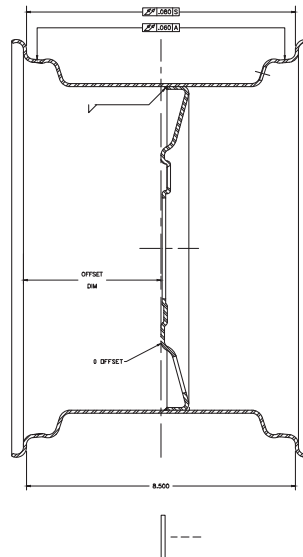


WHEEL OFFSET

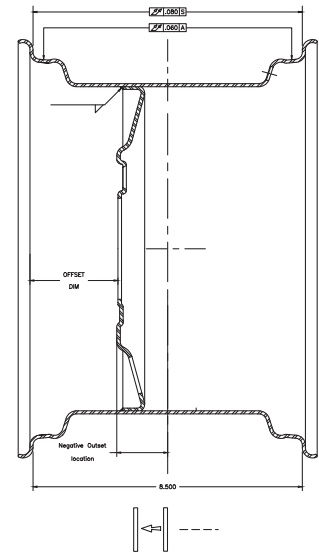


POSTIVE (+) INSET

To right of center line of wheel. Moves wheel towards trailer frame.



CENTERED (0) OFFSET



NEGATIVE (-) OFFSET

To left of center line of wheel. Moves wheel away from trailer frame.

LIMITED 2 YEAR WARRANTY

Kenda's Dexstar Wheel Division (Dexstar) warrants to the original purchaser that its wheels shall be free of defects in the material and workmanship for a period of two (2) years from the date of the first sale of the trailer incorporating such components.

WHAT YOU MUST DO TO MAKE A CLAIM:

1. You must be the original purchaser of the trailer of which the wheels were originally installed.
2. You must promptly notify us within the warranty period of any defect and provide us with any substantiation that we may reasonably request.
3. The wheels must have been installed and maintained in accordance with good industry practice and any specific Dexstar recommendations.

EXCLUSIONS

This warranty does not extend to or cover defects caused by:

1. Normal wear and tear.
2. Improper installation or use.
3. Improper wheel nut torque.

LIMITATIONS

1. In all cases Dexstar reserves the right to fully satisfy its obligations under the Limited Warranty by refunding the then-current list price of the defective wheel (or, if the wheel has been discontinued, of the most nearly comparable current product).
2. This warranty is nontransferable.

GENERAL

The foregoing warranty is exclusive and in lieu of all other warranties except that of title, whether written, or oral or implied, in fact or in law (including any warranty of merchantability or fitness for a particular purpose.)

This warranty gives you specific legal rights, and you may also have other rights which vary from state to state.

The duration of any implied warranties, including the implied warranties of merchantability and fitness for a particular purpose, are limited to the duration of the express warranties herein. Dexstar hereby excludes incidental and consequential damages, including loss of time, inconvenience, loss of use, towing fees, telephone calls or cost of meals, for any breach of any express or implied warranties of merchantability and fitness for a particular purpose. Some states do not allow limitations on how long an implied warranty lasts, or the exclusion or limitation of incidental or consequential damages, so the above exclusions or limitations may not apply to you. Contact the following with inquiries regarding this warranty:

Kenda, Dexstar Wheel Division Quality Department (574) 295-3535

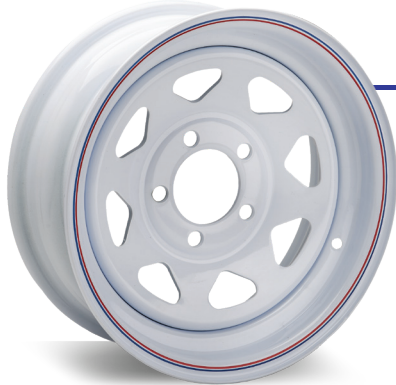


shown in shown in color code **2J**
Starlight Silver

DIRECTIONAL

SPECIFICATIONS

Base Part Number (xx - refer to color chart)	Rim Size and Bead Contour	Bolt Hole Pattern	Pilot Diameter (inches)	Stud Size Lug Chamfer	Center Offset (inches)	Load Capacity (lbs)
017-318-xx	13 x 4.5 JJ	5-4.5	3.19	1/2"-20 60°	0	1375
017-319-xx	14 x 5.5 JJ	5-4.5	3.19	1/2"-20 60°	0	2200
017-320-xx	15 x 5 JJ	5-4.5	3.19	1/2"-20 60°	0	2200
017-321-xx	15 x 6 JJ	6-5.5	4.27	1/2"-20 60°	0	2860



shown in color code **1x**
Bright White with Red/Blue stripes

SPOKE

SPECIFICATIONS

Base Part Number (xx - refer to color chart)	Rim Size and Bead Contour	Bolt Hole Pattern	Pilot Diameter (inches)	Stud Size Lug Chamfer	Center Offset (inches)	Load Capacity (lbs)
017-213-xx	12 x 4 JA	4-4.0	2.84	1/2"-20 60°	0	1250
017-214-xx	12 x 4 JA	5-4.5	3.19	1/2"-20 60°	0	1250
017-201-xx	13 x 4.5 JJ	4-4.0	2.65	1/2"-20 60°	0	1375
017-189-xx	13 x 4.5 JJ	5-4.5	3.19	1/2"-20 60°	0	1660
017-142-xx	14 x 5.5 JJ	5-4.5	3.19	1/2"-20 60°	0	2200
017-143-xx	15 x 5 JJ	5-4.5	3.19	1/2"-20 60°	0	2200
017-384-xx	15 x 5 JJ	5-5	3.19	1/2"-20 60°	0	2200
017-149-xx	15 x 6 JJ	5-4.5	3.19	1/2"-20 60°	0	2200
017-422-xx	15 x 6 JJ	5-5	3.19	1/2"-20 60°	0	2200
017-144-xx	15 x 6 JJ	6-5.5	4.27	1/2"-20 60°	0	2860
017-243-xx	16 x 6 LK	6-5.5	4.27	1/2"-20 60°	0	3520
017-162-xx	16 x 6 LK	8-6.5	4.90	1/2"-20 60°	0	3750
017-308-xx	16 x 6 LK	8-6.5	4.90	1/2"-20 60°	0	4100



shown in color code **1T**
Black Full

CONVENTIONAL

SPECIFICATIONS

Base Part Number (xx - refer to color chart)	Rim Size and Bead Contour	Bolt Hole Pattern	Pilot Diameter (inches)	Stud Size Lug Chamfer	Center Offset (inches)	Load Capacity (lbs)
017-078-xx	13 x 4.5 JJ	5-4.5	2.62	1/2"-20 60°	+50	1480
017-114-xx	14 x 5.5 JJ	5-4.5	2.62	1/2"-20 60°	+50	1865
017-115-xx	15 x 5 JJ	5-4.5	2.62	1/2"-20 60°	+50	1820
017-116-xx	15 x 5 JJ	6-5.5	3.65	1/2"-20 60°	0	1820
017-117-xx	15 x 6 JJ	5-4.5	2.62	1/2"-20 60°	+50	1820
017-118-xx	15 x 6 JJ	6-5.5	3.65	1/2"-20 60°	0	2600
017-235-xx	16 x 6 LK	6-5.5	3.65	1/2"-20 60°	0	3050
017-153-xx	16 x 6 LK	8-6.5	4.89	1/2"-20 60° 9/16"-18 60°	+50	3750
017-302-xx	16 x 6 LK	8-6.5	4.89	1/2"-20 60° 9/16"-18 60°	+50	4400

Inset = Positive [+] moves tire towards the centerline of the trailer.
Outset = Negative [-] moves tire away from centerline of trailer.



shown in color code **2J**
Starlight Silver

MOD

SPECIFICATIONS

Base Part Number (xx - refer to color chart)	Rim Size and Bead Contour	Bolt Hole Pattern	Pilot Diameter (inches)	Stud Size Lug Chamfer	Center Offset (inches)	Load Capacity (lbs)
017-227-xx	12 x 4 JA	4-4.0	2.84	1/2"-20 60°	0	1250
017-228-xx	12 x 4 JA	5-4.5	3.19	1/2"-20 60°	0	1250
017-366-xx	12 x 4 JA	5-4.5	3.19	1/2"-20 60°	-.50	1520
017-355-xx	13 x 4.5 JJ	4-4.0	2.65	1/2"-20 60°	0	1660
017-229-xx	13 x 4.5 JJ	5-4.5	3.19	1/2"-20 60°	0	1725
017-230-xx	14 x 5.5 JJ	5-4.5	3.19	1/2"-20 60°	0	2200
017-231-xx	15 x 5 JJ	5-4.5	3.19	1/2"-20 60°	0	2200
017-377-xx	15 x 5 JJ	5-5	3.19	1/2"-20 60°	0	2200
017-232-xx	15 x 6 JJ	5-4.5	3.19	1/2"-20 60°	0	2200
017-430-xx	15 x 6 JJ	5-5	3.19	1/2"-20 60°	0	2200
017-233-xx	15 x 6 JJ	6-5.5	4.27	1/2"-20 60°	0	2860
017-255-xx	16 x 6 LK	6-5.5	4.27	1/2"-20 60°	0	3520
017-281-xx	16 x 6LK	8-6.5	4.90	1/2"-20 60° 9/16"-18 60°	+.50	3750
017-293-xx	16 x 6 LK	8-6.5	4.90	1/2"-20 60° 9/16"-18 60°	0	3750
017-309-xx	16 x 6 HK	8-6.5	4.90	1/2"-20 60° 9/16"-18 60°	+.50	4400
017-310-xx	16 x 6 HK	8-6.5	4.90	1/2"-20 60° 9/16"-18 60°	0	4400



shown in color code **1W**
Bright White

SOLID CENTER

SPECIFICATIONS

Base Part Number (xx - refer to color chart)	Rim Size and Bead Contour	Bolt Hole Pattern	Pilot Diameter (inches)	Stud Size Lug Chamfer	Center Offset (inches)	Load Capacity (lbs)
017-260-xx	12 x 4 JA	4-4.0	2.84	1/2"-20 60°	0	1250
017-295-xx	12 x 4 JA	5-4.5	3.19	1/2"-20 60°	0	1250
017-288-xx	13 x 4.5 JJ	4-4.0	2.65	1/2"-20 60°	0	1660
017-250-xx	13 x 4.5 JJ	5-4.5	3.19	1/2"-20 60°	0	1660
017-252-xx	14 x 5.5 JJ	5-4.5	3.19	1/2"-20 60°	0	2200
017-350-xx	15 x 5 JJ	5-4.5	3.19	1/2"-20 60°	0	2200
017-356-xx	15 x 6 JJ	5-4.5	3.19	1/2"-20 60°	0	2200
017-367-xx	15 x 6 JJ	6-5.5	4.27	1/2"-20 60°	0	2860
017-442-xx	16 x 6 LK	8-6.5	4.90	1/2"-20 60° 9/16"-18 60°	0	3750



shown in color code **1T**
Black Full

TRI OVAL

SPECIFICATIONS

Base Part Number (xx - refer to color chart)	Rim Size and Bead Contour	Bolt Hole Pattern	Pilot Diameter (inches)	Stud Size Lug Chamfer	Center Offset (inches)	Load Capacity (lbs)
017-347-xx	15 x 5 JJ	5-4.5	3.19	1/2"-20 60°	0	2200
017-345-xx	15 x 6 JJ	5-4.5	3.19	1/2"-20 60°	0	2200
017-348-xx	15 x 6 JJ	6-5.5	4.27	1/2"-20 60°	0	2860
017-343-xx	16 x 6 LK	8-6.5	4.90	9/16"-18 60°	0	3750

Inset = Positive [+] moves tire towards the centerline of the trailer.
Outset = Negative [-] moves tire away from centerline of trailer.



shown in color code **1S**
Silver Sparkle

VINTAGE 494

SPECIFICATIONS

Base Part Number (xx - refer to color chart)	Rim Size and Bead Contour	Bolt Hole Pattern	Stud Size Lug Chamfer	Center Offset (inches)	Load Capacity (lbs)
017-029-1S	13 x 4.5 JJ	4-9.44	4 x 9.44	+0.50	1315
017-119-1S	14 x 5.5 JJ	4-9.44	4 x 9.44	+0.50	1860
017-120-1S	15 x 5 JJ	4-9.44	4 x 9.44	+0.50	1680
017-121-1S	15 x 6 JJ	4-9.44	4 x 9.44	+0.50	2330

HUB PILOTED 17.5" SINGLE SOLID CENTER

SPECIFICATIONS

Base Part Number (xx - refer to color chart)	Rim Size and Bead Contour	Bolt Hole Pattern	Pilot Diameter (inches)	Stud Size Lug Chamfer	Center Offset (inches)	Load Capacity (lbs)
K17-240-xx	17.5 x 6.75 HC	8-6.5	4.75	5/8" - 18	-0.31	4805
K17-241-xx	17.5 x 6.75 HC	8-6.5	4.75	5/8" - 18	0.19	4805
K17-298-xx	17.5 x 6.75 HC	8-6.5	4.75	5/8" - 18	-0.50	6005



shown in color code **54**
Gray

14.5" & 16.5" STUD PILOTED

SPECIFICATIONS

Base Part Number (xx - refer to color chart)	Rim Size and Bead Contour	Bolt Hole Pattern	Pilot Diameter (inches)	Stud Size Lug Chamfer	Center Offset (inches)	Load Capacity (lbs)	
Stud Piloted 14.5" Wheels							
017-283-xx	14.5 x 6 MH	6-5.5	3.65	1/2"-20 60°	+0.50	3085	Conventional
Stud Piloted 16.5" Wheels							
017-107-xx	16.5 x 9.75 T	8-6.5	4.78	5/8" - 18 90°	-0.50	4200	Solid
017-215-xx	16.5 x 9.75 T	8-6.5	4.78	5/8" - 18 90°	0.30	4200	Solid



shown in color code **1W**
Bright White

DUAL WHEELS

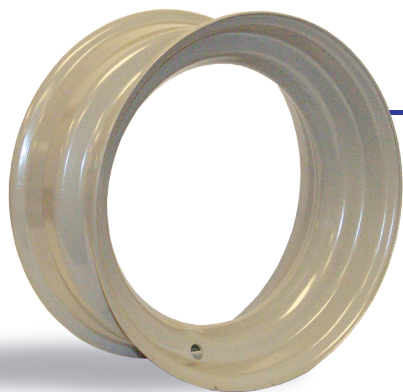
SPECIFICATIONS

Base Part Number (xx - refer to color chart)	Rim Size and Bead Contour	Bolt Hole Pattern	Pilot Diameter (inches)	Stud Size Lug Chamfer	Center Offset (inches)	Load Capacity (lbs)
017-279-xx	16 x 6 HK	8-6.5	4.75	5/8" - 18	-5.50	3500
017-158-xx	16 x 6 HK	8-6.5	4.56	5/8" - 18	-5.50	3100
017-160-xx	16 x 6 HK	8-6.5	4.89	5/8" - 18	-5.50	3100



shown in color code **25**
E-Coat Gray

Inset = Positive [+] moves tire towards the centerline of the trailer.
Outset = Negative [-] moves tire away from centerline of trailer.



shown in color code **25**
E-Coat grey

14.5" MOBILE HOME RIMS

SPECIFICATIONS: **STANDARD**

Part Number	Rim Size	Mounting	Stud Size Wheel Screw	Hub	Load Capacity (lbs)
017-032-25	14.5 x 6.00 MH	Rim Clamps	1/2" - 13 Hex Head	MH	3100

Note: Rim is not to be remounted

SPECIFICATIONS: **DEMOUNTABLE**

Part Number	Rim Size	Mounting	Stud Size Wheel Screw	Hub	Load Capacity (lbs)
017-053-xx	14.5 X 6.00 MH	Rim Clamps	9/16" - 18 Stud	MH	3050

Inset = Positive [+] moves tire towards the centerline of the trailer.
Outset = Negative [-] moves tire away from centerline of trailer.

COLORS AND STRIPING

Dexstar utilizes a unique multi-stage powder coating process producing vibrant, durable, eye-catching color wheels. We are happy to create or match custom colors to enhance your RV, marine, utility and other towable trailers. Add a pin stripe accent for further style and shine.

STANDARD COLORS **CODE**

Bright White	1W
Bright White with Red/Blue stripes	1X
Black Full	1T
Starlight Silver	2J
Silver Sparkle (exclusive 3d effect using a clear coat & metallic flakes)	1S
Gray	54
Gray E-coat Only	25

SPECIALTY COLORS* **CODE**

Galvanized	30
Unicream	61
Red	87
Sea Foam	89
Dark Blue	90
Yellow Deere	28
Belair Blue	70

* Additional charges may apply



90
DARK BLUE



70
BELAIR BLUE



89
SEA FOAM



61
UNICREAM



28
YELLOW DEERE



87
RED

WHEEL MATCHING

BOLT PATTERN	HUB DIAMETER	WHEEL DIAMETER	VALVE HOLE	STUD SIZE	WHEEL BOLT TORQUE
4 on 4.0"	5.50"	12" & 13"	.45	1/2" -20 -60*	50-75 LB/FT
5 on 4.5"	6.50"	12" & 13"	.45	1/2" -20 -60*	50-75 LB/FT
5 on 4.5"	6.50"	14" & 15"	.45	1/2" -20 -60*	90-120 LB/FT
5 on 5"	6.50"	15"	.45	1/2" -20 -60*	90-120 LB/FT
6 on 5.5"	7.4"	14.5" & 15"	.45	1/2" -20 60*	90-120 LB/FT
6 on 5.5"	7.4"	16" & 16.5"	.625	1/2" -20 60*	90-120 LB/FT
6 on 5.5"	7.4"	16" & 16.5"	.625	9/16" -18 60*	175-225 LB/FT
8 on 6.5"	8.25"	14.5"	.45	5/8" -18 90*	175-225 LB/FT
8 on 6.5"	8.25"	16" & 16.5"	.625	1/2" -20 60*	90-120 LB/FT
8 on 6.5"	8.25"	16" & 16.5"	.625	9/16" -18 60*	175-225 LB/FT
8 on 6.5"	8.25"	16" & 16.5"	.625	5/8" -18 90*	175-225 LB/FT
8 on 6.5"	Hub Piloted	14.5"	.45	5/8" -18 Flange	275-325 LB/FT
8 on 6.5"	Hub Piloted	16", 16.5" & 17.5"	.625	5/8" -18 Flange	275-325 LB/FT

The diameters listed represent the recommended sizes for wheel mounting faces. The dimensions indicated are for the flat contact that interface with the hub.

Improperly clamped wheels may loosen and could come off unexpectedly while traveling, resulting in a dangerous situation. Dexstar recommends that wheel fasteners be checked frequently and retorqued to the appropriate level as needed.

Also of vital importance is understanding the different wheel clamping systems. Smaller steel wheels up to and including some 16" varieties are normally stud piloted and will typically use a 60-degree cone nut. The cone portion of the nut mates to a matching cone seat in the wheel center. These are generally 1/2" - 20 or 9/16" - 18 thread sizes. There are some larger wheels that are designed to be clamped with 5/8" nuts featuring a 90-degree cone seat. This type of wheel generally does not have a center hole that closely fits the hub.

90-degree cone nuts must NEVER be used in 60-degree cone seat wheels. The use of mismatched nuts will result in a loss of clamping force and can cause wheel run-off.

Larger wheels generally will be hub piloted and require either clamping rings with 90 degree cone nuts to attach them to the hub or they can be mounted with flange nuts directly on the wheel. The benefit of the clamp ring system is they require lower torque. Both of these mounting systems typically use 9/16" - 18" or 5/8" - 18 thread size. Hub piloted wheels require a close fit of the center hole to the hub.

Make sure you understand the requirements of the wheels and clamping systems that you specify for your vehicles. Misuse can result in costly and dangerous failures.



DEXCAT22

©2022 Kenda. All rights reserved.

KENDA
Designed for Your Journey

DEXSTAR
WHEEL

400 Collins Road, Elkhart, IN 46516
574.295.3535 • Fax: 574.522.5208